

LIVI/X

Automation for residential sliding gates
up to 900 Kg



For residential usage



Available in 230V and 24V



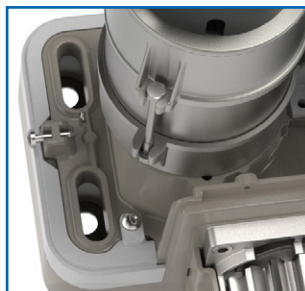
#fastasyoulike!
Standard or fast speed
motors (16 m/min for art.
LIVI 6/24X/M-BOOST)



Improved aesthetics and features



Additional protection of the release system for increased reliability. New transparent control unit box with easy opening system.



New slotted fixing holes offer greater adjustment during installation, ensuring backward compatibility with previous LIVI models



New design with the possibility of installing an LED strip (optional LED kit - **available Q2 2024**)

New ABS crankcase for greater weather resistance. Increased degree of protection compared to previous models (IP44)



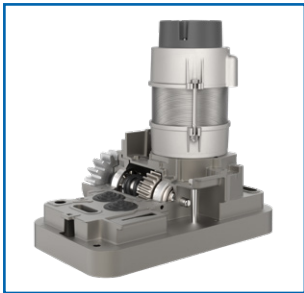
The LIVI/X is equipped with a new magnetic limit switch system, consisting of a new technology sensor and a set of magnets attached to the multi-adjustable rack.



LIVI/X	Opening speed	10 m/min
LIVI/X-BOOST		16 m/min

Note: the opening speed could decrease according to the installation characteristics

Reliability as always



All our products are made with high quality materials, such as steel and bronze, which guarantee reliability over time.



Compatible with external cable release (item 450N and item BLINDOS - optional), to always have safe access from outside the property



Battery kit with dedicated support (optional for 24V models), to guarantee operation during power outages



230V versions are equipped with a physical encoder for better control and obstacle detection



The DE@NET universal control board makes this operator compatible with the NETLINK System.



Compatible with NETCOM, the device for installation, maintenance and remote management, from your office!



Models

230V ~ operator with control board, limit switches and encoder



COD.	Art.	DEA	⚡	EN 12453	ENCODER	⚑	kg	⌚	OTHER CHARACTERISTICS
611000	LIVI 6X/M	NET230N	230V	600 kg	✓	M	11	48	<ul style="list-style-type: none"> Self-locking with magnetic limit switch Speed adjustment and slow down in opening and closing Motor control by encoder and obstacle detection Anti-crashing safety device
612000	LIVI 9X/M	NET230N	230V	900 kg	✓	M	12,5	48	

All models have: control board and fixing plate (to be screwed) included

24V ~ operators with control board and limit switches



COD.	Art.	DEA	⚡	EN 12453	ENCODER	⚑	kg	⌚	OTHER CHARACTERISTICS
611100	LIVI 6/24X/M	NET24N	24V	600 kg		M	12	48	<ul style="list-style-type: none"> Self-locking with magnetic limit switch Speed adjustment and slow down in opening and closing Anti-crashing safety device Versions with increased speed only in BOOST models (16m/min)
611110	LIVI 6/24X/M-BOOST (16m/min)	NET24N	24V	600 kg		M	12	48	
612100	LIVI 9/24X/M	NET24N	24V	900 kg		M	12	48	

All models have: control board and fixing plate (to be screwed) included

212E 230V ~ operators with control board and limit switches



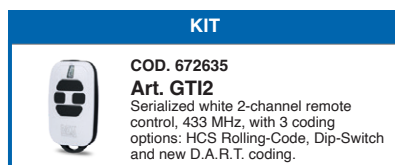
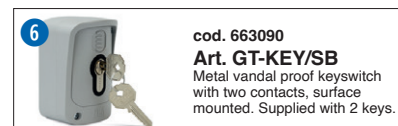
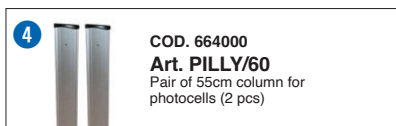
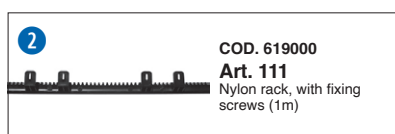
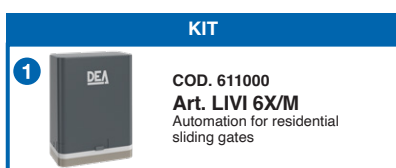
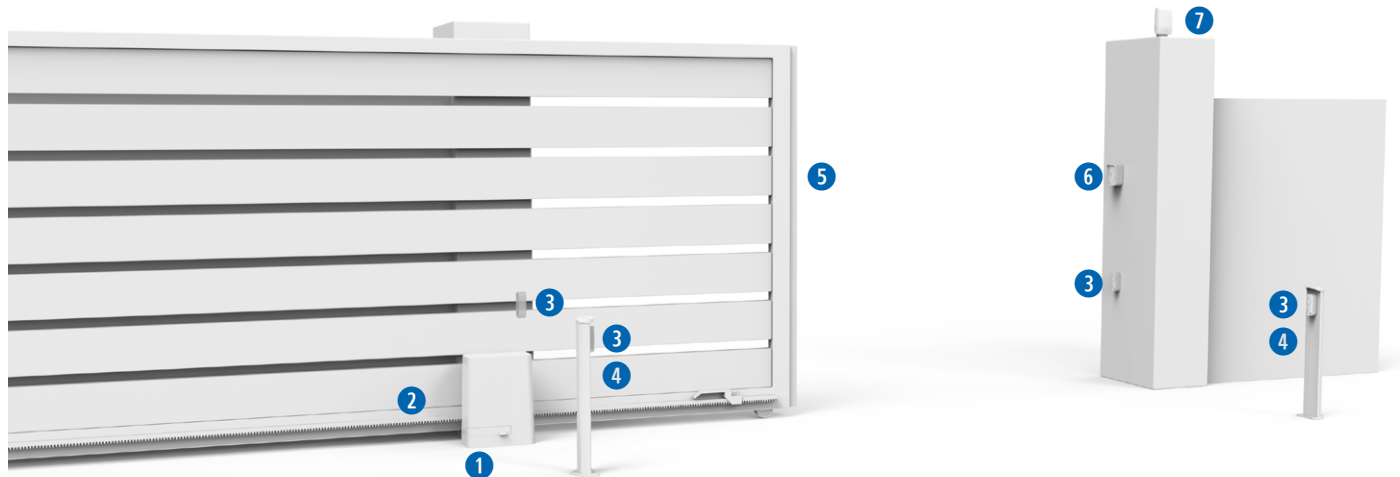
COD.	Art.	DEA	⚡	EN 12453	ENCODER	⚑	kg	⌚	OTHER CHARACTERISTICS
611010	LIVI 6X/E/M*	212E	230V	600 kg		M	11	48	<ul style="list-style-type: none"> ATTENTION: not compatible with NETLINK Self-locking with magnetic limit switch Electronic force adjustment Automatic working time learning Controlled input for external safety device
612010	LIVI 9X/E/M*	212E	230V	900 kg		M	12,5	48	

All models have: control board and fixing plate included

KIT LIVI/X

COD.	Art.		EN 12453	kg	⌚
611200	KIT LIVI 6X/M	LIVI 6X/M (NET230N) + LINEAR + AURA/N + 2xGTI2 + 127	600	11,8	48
612200	KIT LIVI 9X/M	LIVI 9X/M (NET230N) + LINEAR + AURA/N + 2xGTI2 + 127	900	13,2	48
611300	KIT LIVI 6/24X/M	LIVI 6/24X/M (NET24N) + LINEAR + AURA/N + 2xGTI2	600	12,8	48
611310	KIT LIVI 6/24X/M-BOOST	LIVI 6/24X/M-BOOST (NET24N) + LINEAR + AURA/N + 2xGTI2 + 127	600	12,8	48
612300	KIT LIVI 9/24X/M	LIVI 9/24X/M (NET24N) + LINEAR + AURA/N + 2xGTI2 + 127	900	12,8	48

Example of a typical installation

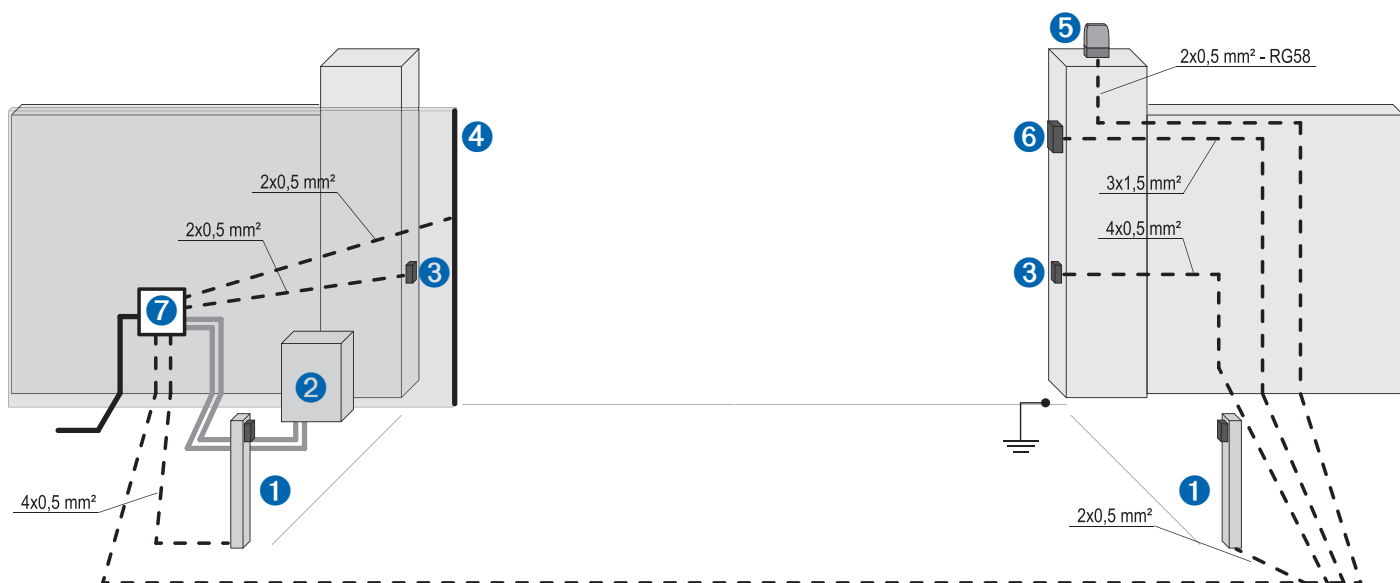


KIT for further details on the kits see price list

Technical info

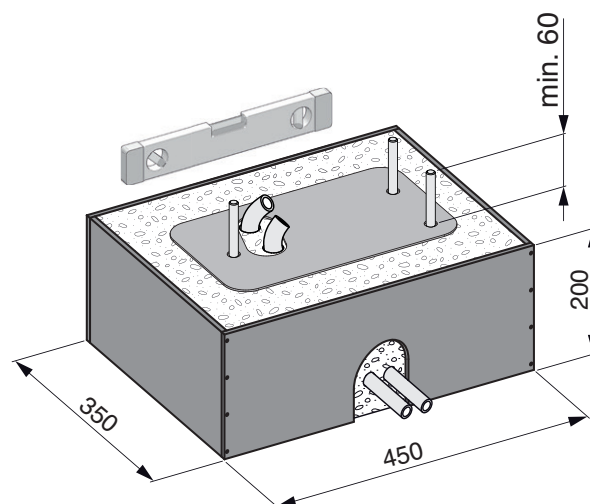
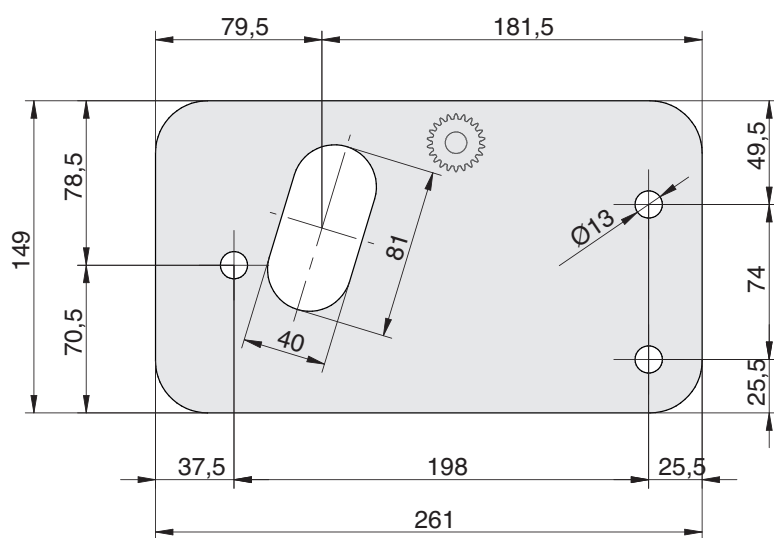
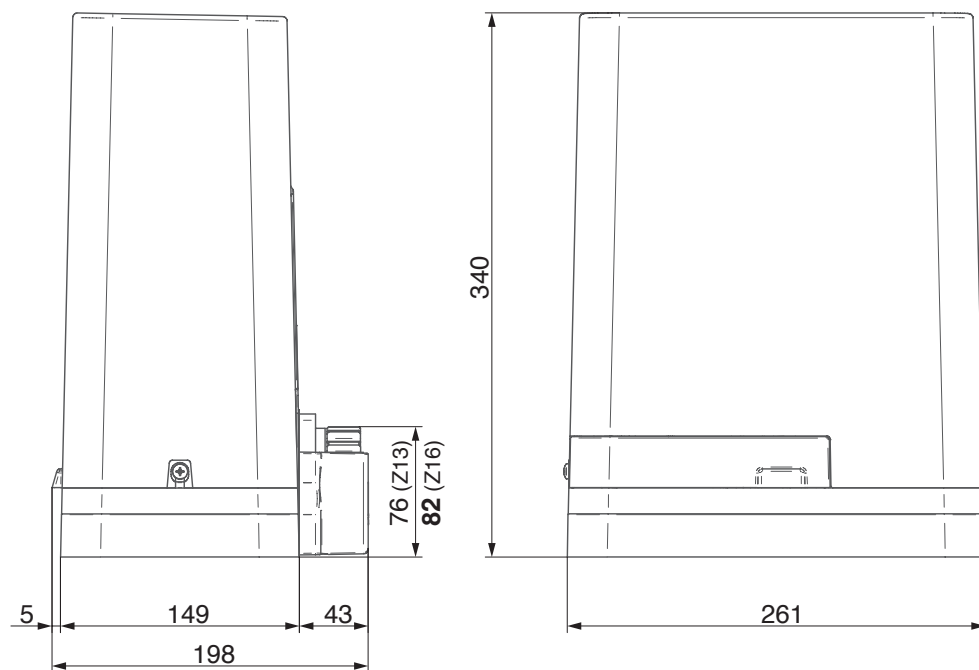
	LIVI 6X/M LIVI 6/XE/M	LIVI 9X/M LIVI 9/XE/M	LIVI 6/24X	LIVI 6/24X/M BOOST	LIVI 9/24X/M
Motor power supply (V)	230 - 240 V ~ (50/60 Hz)				
Motor power supply voltage (V)	230 V ~		24 V ===		
Maximum Power (W)	320	450	80		110
Max thrust (N)	340	490	210	240	260
Duty cycle (cycles/hour) Gate L=5 metres	18	11	22		18
N. max cycles in 24h. Gate L=5 metres	60	40	60		40
Leaf max weight (kg)	600	900	600		900
Built-in capacitor (µF)	8	12,5	-		
Motor thermal protection (°C)	140°C	160°C	-		
Operating temperature (°C)	-20÷50 °C				
Speed (m/min)	10		10	16	10
Standard pinion	Z=16 (m=4mm)				
Weight with packing (Kg)	11	12,5	12		
Sound pressure (dBA)	< 70				
Protection level	IP44				

Wiring



pos.	description
1	Column with photocell
2	Operator
3	Photocells
4	Safety edge
5	Flashing light
6	Keyswitch / Digikey
7	Junction box

Dimensions



notes



DEAuser



DEAuser is the app for **private users** that allows activation of automation at **close proximity** via Bluetooth.

By installing the NET-NODE on all devices with NETLINK technology, users can control their automations through their smart devices.

To be used with:



Art. NET-NODE 2.0
Cod. 677642



DEAinstaller



DEAinstaller is the App dedicated to the **professional installer** and allows Installers to program and manage DEA automations on-site in a simple and intuitive way from their smart devices.

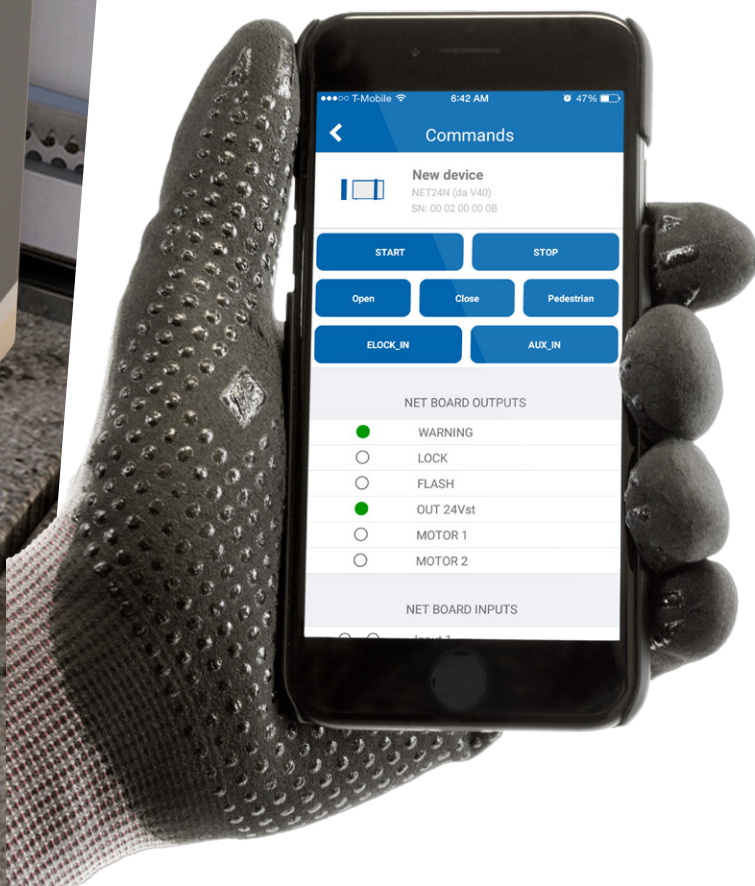
If you use it with the NET-NODE you can:

- ✓ keep a **data backup** of all installations
- ✓ easily adjust the **parameters** of control boards
- ✓ update the **firmware**
- ✓ program the **maintenance**
- ✓ manage or customise the **remotes**
- ✓ read **technical manuals** or have a look at the **electrical connections**
- ✓ control the **inputs** and **output** of the control boards
- ✓ **control** the automation with the App

To be used with:



Art. NET-NODE 2.0
Cod. 677642



Generic accessories



✓ 24V
✓ 120V
✓ 230V

AURA/N
cod. 661130



LINEAR XS
cod. 662080



LINEAR
cod. 662044



COVER/2
cod. 681060



LINEAR SHIELD
cod. 662047



DIGIPRO
cod. 663310



DIGISLIM
cod. 663311



GT-KEY
cod. 663090



BLINDOS
cod. 665000



DIGIRAD/N
cod. 663320



BAT
cod. 629290



GTI2-GTI4
cod. 672635 - 672645



GTI2M-GTI4M
cod. 672603 - 672613

NETLINK

is our technology applied to DEA devices for the smart management of your installations, both **locally** and **remotely**.

